



ELEMAINT is an easy to use Maintenance and Asset Management software which helps the user-customer to achieve:

- Increase in maintenance productivity
- Reduction in equipment downtime
- Savings in lower material costs
- Reduction in MRO inventory
- A quick payback period

ELEMAINT comes with

### WORK MANAGEMENT

- Work Orders for preventive and corrective maintenance
- Activity scheduling and tracking by assets and allocated resources
- Service calls and dispatch instructions

### RESOURCE PLANNING

- Planning and resources allocation for Work Orders
- Tracking in-house hours, capital cost, labor and material costs
- Comparison of budgeted time and cost of Work with actual data

### INVENTORY CONTROL

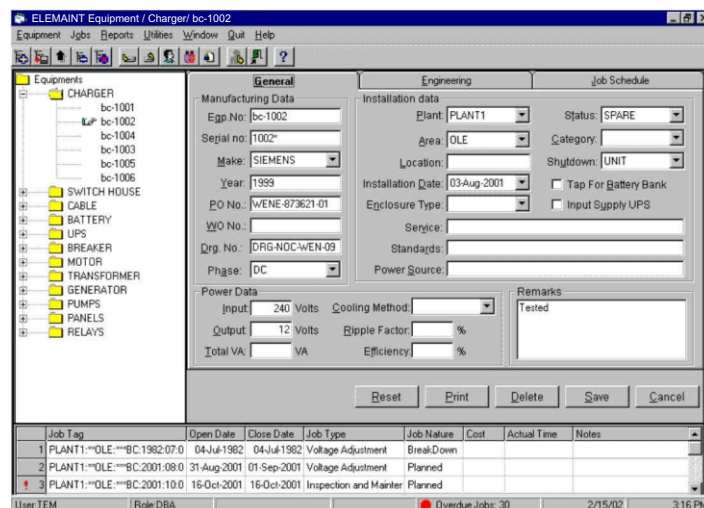
- Real time spares' inventory management
- Tracking inventory in the store rooms
- Automated reordering and store room transfers

### DATA AND DOCUMENT MANAGEMENT

- Comprehensive general and historical data
- Equipment files of procedures, drawings and specifications
- Real time and customizable reports of work activity

### PERFORMANCE ANALYSIS

- Key Performance Indicators (KPIs)
- Reliability and availability statistics
- Predicting equipment degradation



### FEATURES

#### EASY TO USE...

ELEMAINT is extremely user friendly. It provides expandable and collapsible 'trees' to offer intuitive user interface for hierarchical selections. Menus are organized in such a way as to group maximum related information at one place without affecting readability. PDA / Hand Held Terminals can be used to streamline input and parameterization.

### CUSTOMIZABLE...

ELEMAINT supports maintenance and scheduling of standard equipment and assets. Equipment categories, types, jobs, orders, reports can be added or removed as a part of customization process to meet users' specific requirements. Short customization cycles which run parallel to the main execution cycle reduce the over all implementation time.

### SCALABLE...

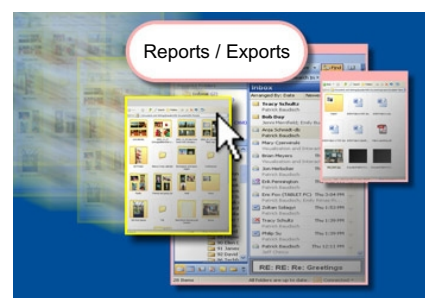
ELEMAINT is scalable from single platform single tenant to multi-platform multi-tenant application. The system can grow with the user-customer and scale to the requirement without geographical constraints.

### RICH REPOSITORY...

Engineering and historical data related to the assets can be analyzed to generate configurable reports, scheduling recommendations, and key performance indicators. These data when used with general data provide effective tracking and management of assets. Equipment failure or degradation can be anticipated using FEMA, Chi Square and Weibull analysis to aid predictive maintenance.

### REPORTING / EXPORTING...

In addition to preconfigured reports, customer can create and use its own templates. ELEMAINT can report activity, schedules, KPIs, pending jobs, cost data, recommendations, material status, equipment status and many more. In fact, database can be queried to report any data which then can be exported in XML format and linked to external systems.



### ADMINISTRATION...

ELEMAINT provides fully customizable administration with five default levels. Utmost attention is given to the operational security and data integrity. Administrator has a mandate to add or delete users, define roles, allocate or deallocate units-areas, grant access rights, and initiate the backup or restore procedures for the entire system.

### TECHNOLOGY

ELEMAINT is scalable, multi-user, multi-site, SOA application. Both web and desktop versions are available.

